

RT01

UHP

The RT01 is designed specifically for racing with a specialized motorsport compound ready to performance on the track.



ECONOMICAL



HANDLING



DRAINAGE



RIM PROTECTION

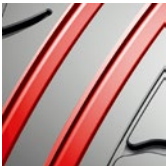
HIGH-SPEED PERFORMANCE

Optimized tread profile and rim lip design ensure tyre sturdiness for exceptional high-speed performance.



RACE SPECIFIC

The wide shoulder design and central rib structure offer exceptional grip and handling for both cornering and straightaways.



DURABILITY

Tread grooves improve grip and reduce potential damage to the tread when braking hard.



DRY AND WET PERFORMANCE

The inner tread grooves effectively drain water while the outer shoulder grooves focus on improving grip.



Rim	Size	LI	SR	PR	XL	Fuel efficiency	Wet Grip	Ext. Rolling Noise	Noise Grade	M+S	3PMSF	EPREL Code
15	195/50R15	82	V									
17	225/45ZR17	94	W		XL							
18	235/40ZR18	95	W		XL							
18	265/35ZR18	97	W		XL							